

MEETINGS, CONFERENCES & EVENTS

Kiawah Island[®]
GOLF RESORT



INSPIRED EVENTS, STORIED DESTINATION

Just 21 miles from the cobblestone boulevards and pastel-hued residences of Historic Charleston, the private gated community of Kiawah Island offers sought-after serenity and seclusion in an unspoiled barrier island setting.

Gather in our picturesque panoramas, immersed in joyfully uplifting and rejuvenating blue and green spaces—where meandering lagoons ornament the lushly forested landscape and the Kiawah River flows, steadfast, into the Atlantic Ocean.

Feel the warm embrace of southern hospitality in an enclave that has been sustainably developed to protect the island's native flora and fauna. The world-class amenities of Kiawah Island Golf Resort have been thoughtfully designed to blend seamlessly into, and leave the gentlest of footprints upon, our natural habitat—where a subtropical climate invites fresh-air enjoyment for every reason, in every season.

An innovative, inspired meeting and event experience awaits you.



THE SANCTUARY AT KIAWAH ISLAND GOLF RESORT

An arched canopy of live oaks welcomes you with a quiet reminder that you have arrived in a place like no other. Guests are awed by The Sanctuary—our Forbes Five-Star, AAA Five-Diamond oceanfront property that is completely at one with its pristine surroundings.

Step through its opulent entry doors and you will be transported back through the centuries to a grand seaside mansion. Designed to be elegant, yet relaxed, the interior is characterized by airy spaces and traditional décor adorned with antiques. At once refined and welcoming, The Sanctuary exemplifies gracious Lowcountry charm.



ACCOMMODATIONS

Splendor beckons within 255 spacious guestrooms and suites, all featuring private balconies overlooking island or ocean views and enhanced with luxurious appointments and spa-inspired bathrooms. The pinnacle of luxurious accommodations, The Presidential Suite, provides 3,000 square feet of comfortably exquisite living space and a private outdoor retreat showcasing a stunning vista.

DINING

Experience delectable dining with panoramic ocean views. Awarded Forbes Four-Star and AAA Four-Diamond ratings, The Ocean Room is Kiawah Island's premier steakhouse. Jasmine Porch specializes in Lowcountry cuisine and gracious southern charm. Enjoy casual fare in The Lobby Bar and alfresco dining at Loggerhead Grill.

WORLD-CLASS AMENITIES

Guests can indulge in a premium level of amenities and personal services. Where our professional staff caters to your every need as you experience exceptional dining, refreshing pools, an immaculate fitness center and premium boutiques.

SPA/SALON

In perfect harmony with our idyllic coastal environment, The Spa at The Sanctuary offers a curated menu of rejuvenating therapies and beautifying services inspired by the sea. Perennially awarded Five Stars by Forbes Travel Guide, The Spa provides a pampering escape to be savored.

MEETINGS AND EVENTS

Pairing incomparable settings with professional services, 16,500 square feet of conference and event spaces are designed to host intimate retreats, corporate board meetings, large-scale general sessions or rewarding incentive programs. Your vision will be carried out with the utmost attention to detail for an experience like no other.



GRAND OAKS BALLROOM

The most expansive space at 6,000 square feet, The Grand Oaks Ballroom can be divided into four smaller salons. The Grand Oaks Foyer is ideal for pre-function receptions while the Garden and Veranda provide memorable settings for outdoor events.



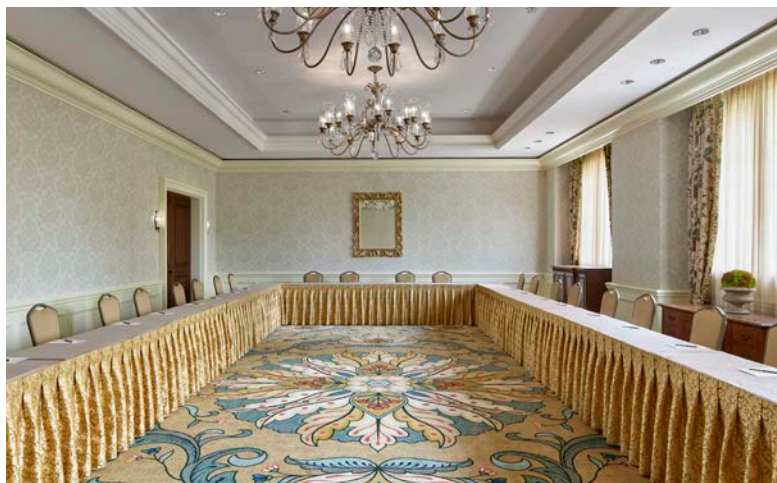
TERRACE BALLROOM

Showcasing a commanding ocean view, this coveted ballroom boasts 3,040 square feet of pure grace and opulence. With classic French doors beckoning guests onto a seaside courtyard and lawn, the Terrace Ballroom is the perfect host to special events, gala receptions and lavish dinners.



HERON

This welcoming and versatile space offers 1,890 square feet and can be divided into two smaller rooms, offering the ideal design and configurations for mid-sized meetings, receptions, breakout sessions and dinner events.



EXECUTIVE MEETING ROOMS

Offering unsurpassed privacy and comfort, the Drayton, Middleton, Shoolbred and Ibis Executive Meeting Rooms are ideal settings for innovative breakout sessions, executive retreats and corporate meetings.

CALHOUN BOARDROOM

This elegantly-appointed boardroom accommodates executive-style seating for 22 guests. Designed with distinctive cypress-paneled walls, The Calhoun Boardroom provides an elite and stylish space for private gatherings.



PRIVATE DINING ROOMS

The private dining rooms located at restaurants within The Sanctuary provide intimate spaces for functions with up to 15 guests. Guests can enjoy the casual ambiance of Jasmine Porch or the opulent setting found in the Wine Room within The Ocean Room.



HOSPITALITY SUITE

Receive your most notable guests in the plush comfort of the Ashley/Cooper hospitality suite. Totalling 1,868 square feet, this welcoming space is equipped with a billiards table and televisions to provide a relaxing retreat.

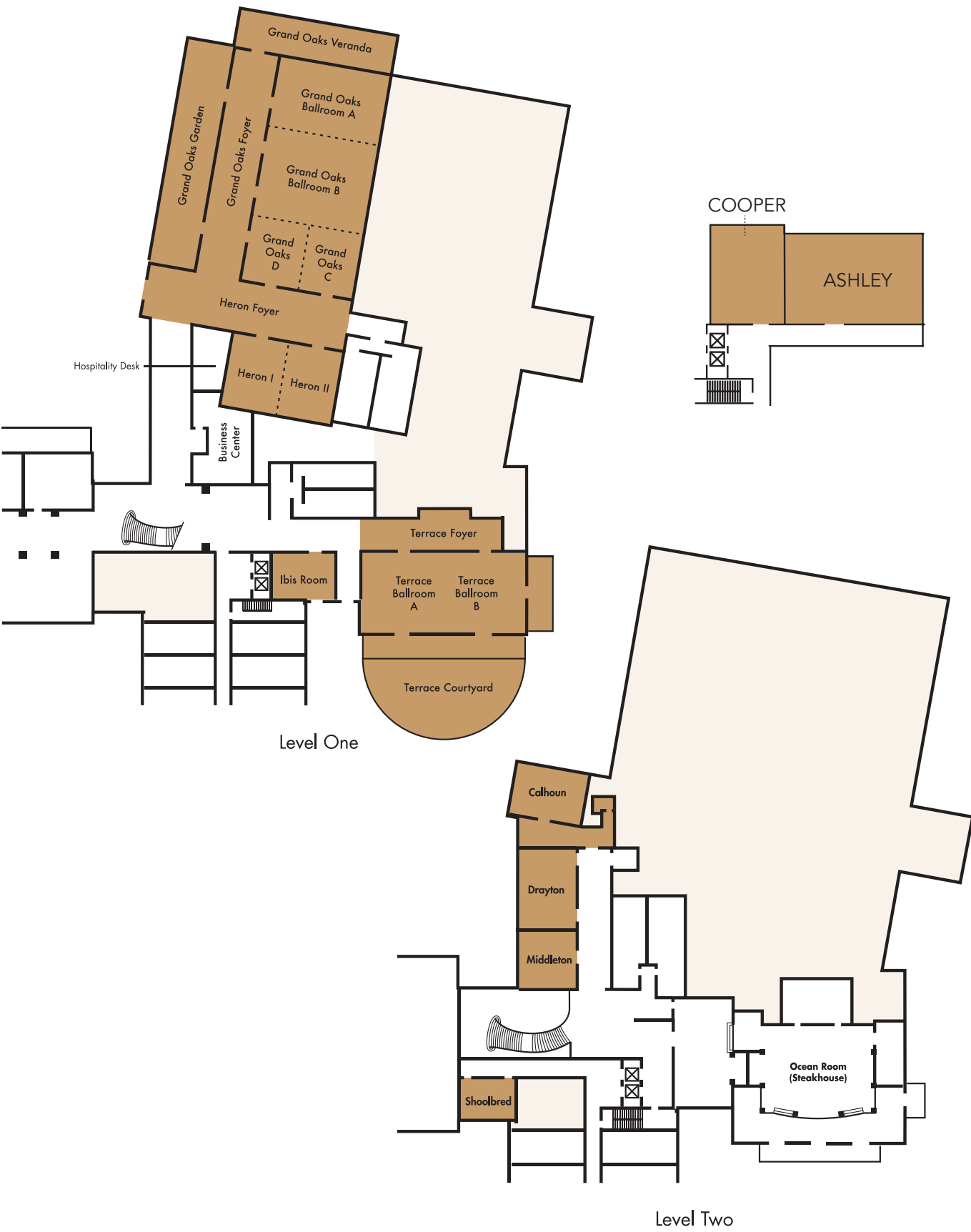


GRAND LAWN

Overlooking the private beach of The Sanctuary along the Atlantic Ocean and embraced by swaying palms, the Grand Lawn offers an unforgettable setting for seaside events. Guests are treated to the calming sounds of surf lapping the sand and enveloped by fragrant air perfumed by manicured gardens.



THE SANCTUARY FLOOR PLANS



THE SANCTUARY CAPACITY CHART

GRAND OAKS BALLROOM								
ROOM	SQUARE FEET	LxW	BANQUET	THEATER	CLASSROOM	RECEPTION	HOLLOW SQUARE	U-SHAPE
Grand Oaks A, B, C, D	5,940	54' x 110'	360	400	250	440	84	N/A
Grand Oaks A	1,836	54' x 34'	80	144	100	170	36	30
Grand Oaks AB	4,212	54' x 78'	200	352	180	320	60	54
Grand Oaks B	2,376	54' x 44'	150	208	108	200	48	40
Grand Oaks BCD	4,104	54' x 76'	300	348	180	380	60	54
Grand Oaks C	864	27' x 32'	50	70	45	90	24	16
Grand Oaks D	864	27' x 32'	50	70	45	90	24	16
Grand Oaks CD	1,728	54' x 32'	100	140	90	180	48	30
Grand Oaks Foyer	1,819	92' x 17'	N/A	N/A	N/A	410	N/A	N/A

Grand Oaks ABCD Ceiling Heights:
Highest Ceiling Point: 18' 11" • Tray Ceiling: 16' 11" • Airwall Track: 15' • Bottom of Chandelier: 12' 9" • Grand Oaks Foyer Ceiling Height Lowest Point: 11'

HERON ROOM								
Heron I & II	1,890	35" x 54"	140	160	100	205	38	30
Heron I	945	35" x 27'	60	70	50	100	28	24
Heron II	945	35" x 27'	60	70	50	100	28	24
Heron Foyer	1,325	53' x 25'	N/A	N/A	N/A	N/A	N/A	N/A

Heron Room Ceiling Heights:
Heron I & II: 12' • Heron Foyer: 11'

TERRACE BALLROOM								
Terrace Ballroom AB	3,040	38' x 80'	160	200	125	290	66	42
Terrace A	1,520	38' x 40'	72	100	80	145	36	24
Terrace B	1,520	38' x 40'	72	100	80	145	36	24
Terrace Foyer	1,344	112' x 12'	N/A	N/A	N/A	125	N/A	N/A
Terrace Courtyard	3,294	54' x 61'	100	N/A	N/A	160	N/A	N/A

Terrace Ballroom Ceiling Heights: 11'

EXECUTIVE/BREAKOUT ROOMS								
Calhoun	880	40' x 22'	N/A — Permanent Conference Table					
Drayton	912	24' x 38"	50	80	45	30	32	28
Middleton	700	28' x 25"	40	50	24	42	24	12
Shoolbred	598	26" x 23"	40	50	24	42	24	12
Ibis	609	21' x 29'	30	48	20	30	14	14

Ceiling Heights: Calhoun: 10' • Drayton & Middleton: 11' • Shoolbred :7' • Ibis: 12'

HOSPITALITY ROOMS (Located on the 5th floor/West Wing)								
Ashley & Cooper	1,782	81' x 22'	N/A	N/A	N/A	150	N/A	N/A
Ashley	1,500	50' x 30'	N/A	N/A	N/A	N/A	N/A	N/A
Cooper	702	27' x 26'	N/A	N/A	N/A	50	N/A	N/A

GRAND LAWN								
Grand Lawn	18,500	185' x 100'	500	NA	NA	750	NA	NA

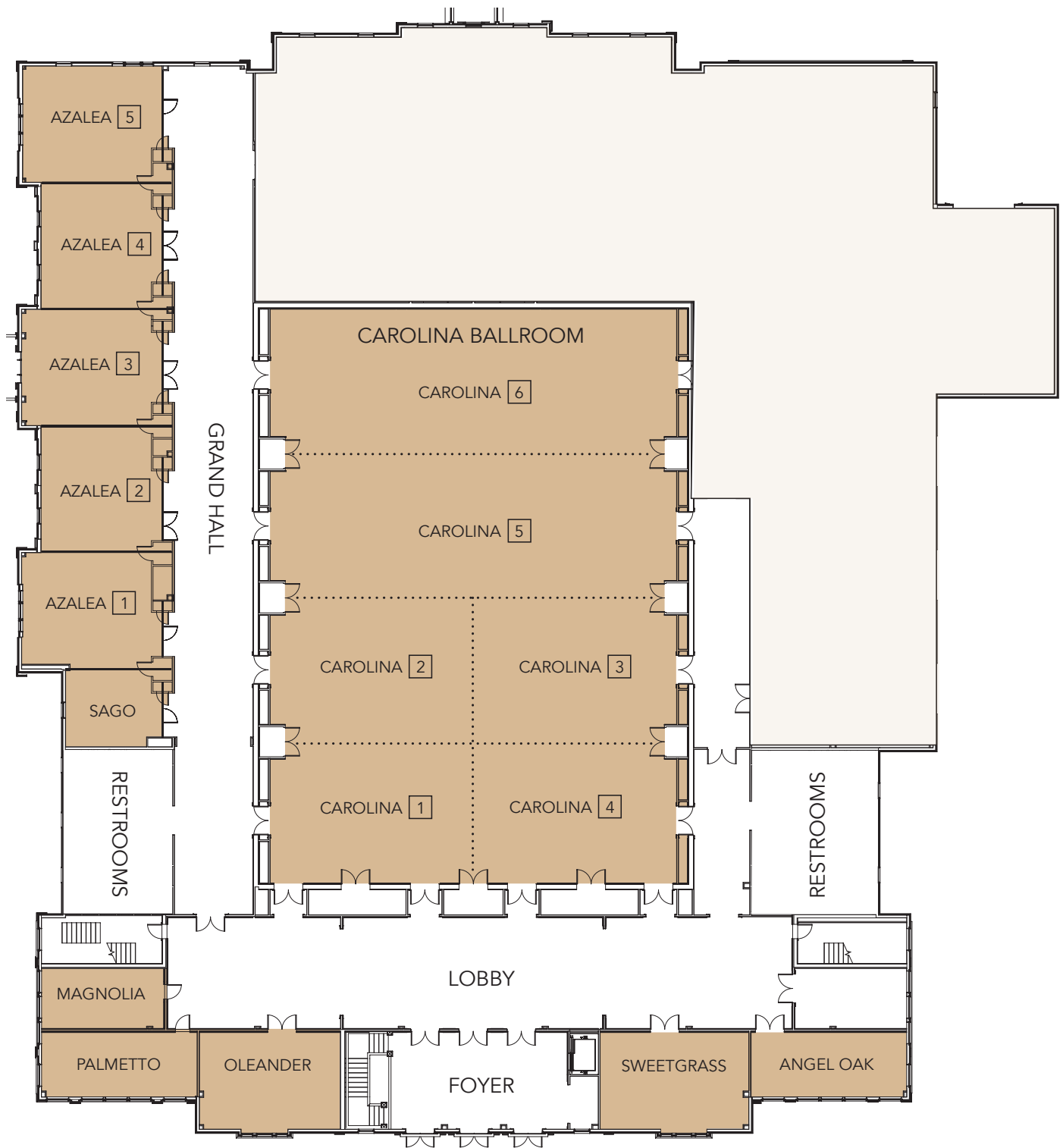


THE WEST BEACH CONFERENCE CENTER

Nestled inside the private gated community of Kiawah Island, the stately West Beach Conference Center places your guests at the heart of the Resort and in close proximity to award-winning accommodations, dining, golf and recreation. Offering an expansive 23,000 square feet of pre-event and meeting spaces, this inspiring and innovative facility is fully customizable to accommodate any size and style gathering. Timeless in its architectural design, the West Beach Conference Center boasts rooms flooded in natural sunlight. Stunning event spaces are surrounded by breathtaking coastal panoramas so you can immerse your guests in Kiawah Island’s unspoiled beauty.



THE WEST BEACH CONFERENCE CENTER
FLOOR PLAN



THE WEST BEACH CONFERENCE CENTER
CAPACITY CHART

ROOM	SQUARE FEET	LxW	BANQUET	THEATER	CLASSROOM	RECEPTION	HOLLOW SQUARE	U-SHAPE
Angel Oak	416	13'x32'	N/A	N/A	N/A	N/A	16	N/A
Azalea 1-5	2,794	24'x110'	160	288	207	250	82	76
Azalea 1	528	24'x22'	40	40	24	30	18	18
Azalea 2	572	26'x22'	40	40	24	30	18	18
Azalea 3	528	24'x22'	40	40	24	30	18	18
Azalea 4	572	26'x22'	40	48	24	30	18	18
Azalea 5	594	27'x22'	40	40	24	40	24	18
Carolina Ballroom	9,675	82'x118'	672	1,080	570	1,000	N/A	N/A
Carolina 1	1,148	29'x41'	60	112	48	65	36	27
Carolina 1 & 4	2,460	30'x82'	120	252	144	130	72	63
Carolina 1-2	2,460	30'x82'	120	200	144	130	72	63
Carolina 1-4	4,920	60'x82'	320	540	288	500	N/A	N/A
Carolina 1-5	7,298	89'x82'	480	810	360	700	N/A	N/A
Carolina 2	1,230	30'x41'	60	112	48	65	36	27
Carolina 2-3	2,460	30'x82'	120	252	144	130	72	63
Carolina 2-3 & 5	4,920	60'x82'	320	540	288	500	N/A	N/A
Carolina 2-3 & 5-6	7,380	90'x82'	480	810	360	700	N/A	N/A
Carolina 3	1,230	30'x41'	60	112	48	65	36	27
Carolina 3-4	2,460	60'x41'	120	200	144	130	72	63
Carolina 4	1,148	28'x41'	60	112	48	65	36	27
Carolina 5	2,460	30'x82'	120	252	144	130	72	63
Carolina 5-6	4,920	60'x82'	320	540	288	500	N/A	N/A
Carolina 6	2,378	29'x82'	120	252	144	130	72	63
Magnolia	300	12'x25'	20	20	12	20	16	14
Oleander	560	20'x28'	50	42	27	50	30	24
Palmetto	416	13'x32'	20	20	12	20	16	14
Sago	300	20'x15'	10	15	6	15	N/A	9
Sweetgrass	560	20'x28'	50	42	27	50	30	24
Grand Hall	2,816	16'x176'	N/A	N/A	N/A	N/A	N/A	N/A



AN UNPARALLELED COLLECTION OF GOLF COURSES

Players from around the world travel to Kiawah Island Golf Resort to test themselves on five world-class courses designed by the extraordinary talents of Pete Dye, Jack Nicklaus, Tom Fazio, Gary Player and Clyde Johnston. Taking full advantage of the island's rolling sand dunes, expansive saltwater marshes and tranquil maritime forests, each architect has created a distinctive expression of the varied challenges and rewards in the game of golf, resulting in a superior player experience and perennial accolades bestowed by prestigious publications. Our conference managers and golf staff will ensure an outing to be remembered by your group—managing details from tee times and pairings to tournament formats and food and beverage service.



THE OCEAN COURSE

The iconic Ocean Course has proudly played host to storied tournaments, including the 1991 Ryder Cup, 2012 and 2021 PGA Championships, indelibly engraving its reputation as one of the world’s greatest golf courses. Unmatched in quality, shot values and sheer beauty, the Pete Dye-designed course offers a true test of skill and challenge along its seaside holes.



TURTLE POINT

Featuring three oceanfront holes, this characteristic Jack Nicklaus design features ample fairways, approachable greens and strategically placed lagoons that place a premium on accuracy. Turtle Point received glowing reviews from players following a complete renovation by Jack Nicklaus and his design team.



OSPREY POINT

Making full use of Kiawah Island’s maritime forests, lagoons and saltwater marshes, Osprey Point is one of the most popular courses with Resort guests. Totally modernized under the direction of Tom Fazio, Osprey Point features tees, greens and fairways grassed with paspalum.



COUGAR POINT

The Gary Player–designed Cougar Point is highlighted by a stretch of holes that run along the Kiawah River, with sweeping marsh vistas regarded as some of the most serene on the island. Due to its natural beauty and exceptional playability, the course is a Resort favorite.



OAK POINT

Oak Point was voted the Golf Course of the Year by the Charleston Golf Owners Association. The completely renovated course offers guests strategic challenges and the enhanced playing surface of paspalum. Increased by up to 40 percent, the greens give more pin positioning options.



TOMMY CUTHBERT GOLF LEARNING CENTER

Ideal for team-building or as an incentive, corporate golf events can be tailored to fit any group’s needs. Instructors work with you to build a program from various formats—from private lessons to clinics—to craft an experience that is educational and enjoyable for all participants.



GOLF COURSE CLUBHOUSES

Gather your group in traditional yet relaxed spaces in classic clubhouses found at The Ocean Course, Turtle Point, Cougar Point and Osprey Point. Each provides exquisite meeting facilities with delectable on-site dining and expansive views of the Resort’s world-class championship golf courses.



THE OCEAN COURSE CLUBHOUSE

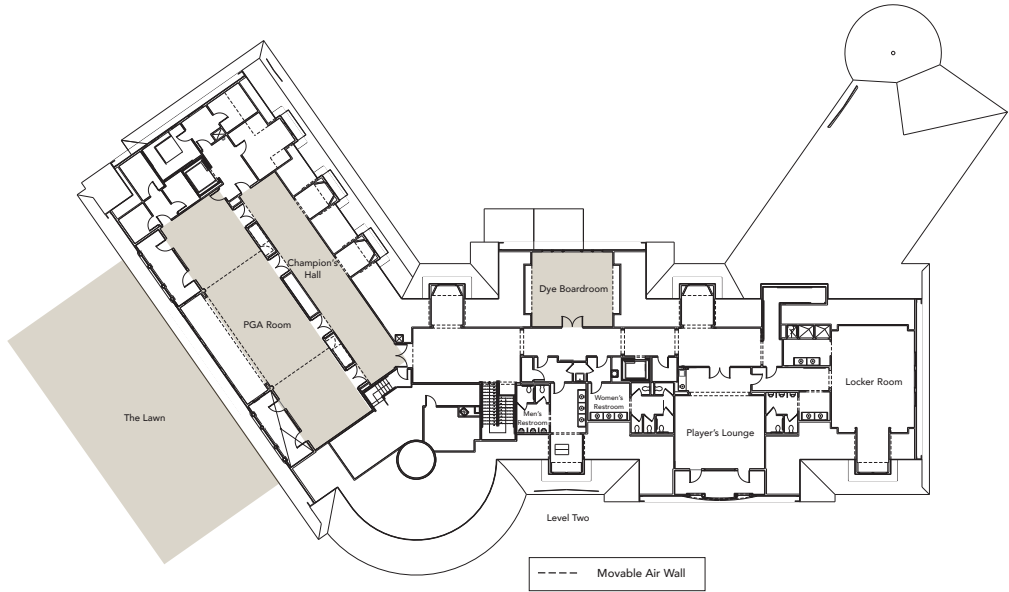
A memorable setting, the Clubhouse boasts spectacular views of the Atlantic and 18th green of The Ocean Course—proud host of the 1991 Ryder Cup as well as the 2012 and 2021 PGA Championships. While the exterior suggests a classic coastal cottage, the interior features over 3,000 square feet of space. Enjoy fine dining in The Atlantic Room—the island’s signature seafood restaurant—or the more relaxed atmosphere of the Ryder Cup Bar. Both restaurants showcase sweeping ocean views.

PGA Room
Offering 1,686 square feet of space, the PGA Room accommodates 120 guests for banquets, 152 for theater-style presentations and 78 in classroom settings.

Dye Boardroom
Named in honor of The Ocean Course’s legendary designer Pete Dye and his wife Alice, the Dye Boardroom offers an elegant setting for high-level board meetings and executive retreats.

Champion’s Hall
With 792 square feet of space adjacent to the PGA Room, this area provides the ideal setting for pre-function events.

The Lawn
Walk in the footsteps of golf’s greats and take in unobstructed views of the iconic course and the Atlantic Ocean when you host an unforgettable outdoor event on The Lawn.



Room	Sq. Ft.	Dimensions	Ceiling Height	Banquet	Theater	Classroom	Reception	U-Shape
PGA Room	1,686	80' x 21'	14'	120	152	78	N/A	66
Dye Boardroom	608	23' x 22'	14'	N/A	Conference table with executive seating for 12 guests			
Champion's Hall	792	66' x 12'	12'	N/A	N/A	N/A	N/A	N/A
The Lawn	4,600	N/A	N/A	250	N/A	N/A	325	N/A



OSPREY POINT CLUBHOUSE

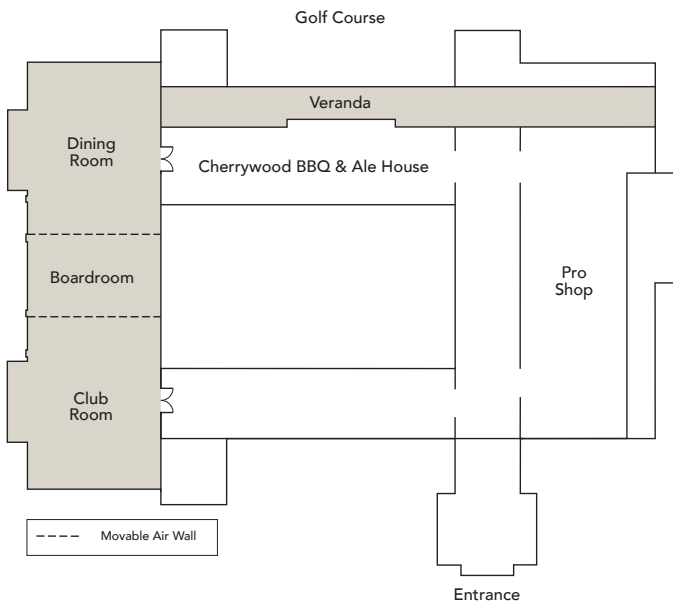
Osprey Point Clubhouse is ideal for executive-level meetings and special catered events. Enjoy over 60 beers, award-winning Southern barbecue smoked over local hardwoods or a gourmet burger at Cherrywood BBQ and Ale House as you take in the expansive view of the Lowcountry landscape.

Dining Room and Club Room

Each offering a total of 1,392 square feet of space, the Dining Room and the Club Room can each accommodate up to 70 guests for receptions and banquets, and as many as 72 guests for meetings.

Boardroom

The Boardroom can host up to 20 guests for banquets and as many as 24 guests for meetings.



Veranda

The Veranda accommodates 125 guests for receptions, while offering expansive views of the Tom Fazio–designed golf course.

Room	Sq. Ft.	Dimensions	Ceiling Height	Banquet	Theater	Classroom	Reception	U-Shape
Club Room	1,392	44' x 32'	14'	70	72	72	70	30
Boardroom	576	18' x 32'	14'	20	24	24	N/A	15
Dining Room	1,392	42' x 32'	14'	70	72	72	70	30
Combined Rooms	3,360	104' x 32'	14'	180	N/A	N/A	200	96
Veranda	1,338	70' x 15'	14'	80	N/A	N/A	125	N/A



TURTLE POINT CLUBHOUSE

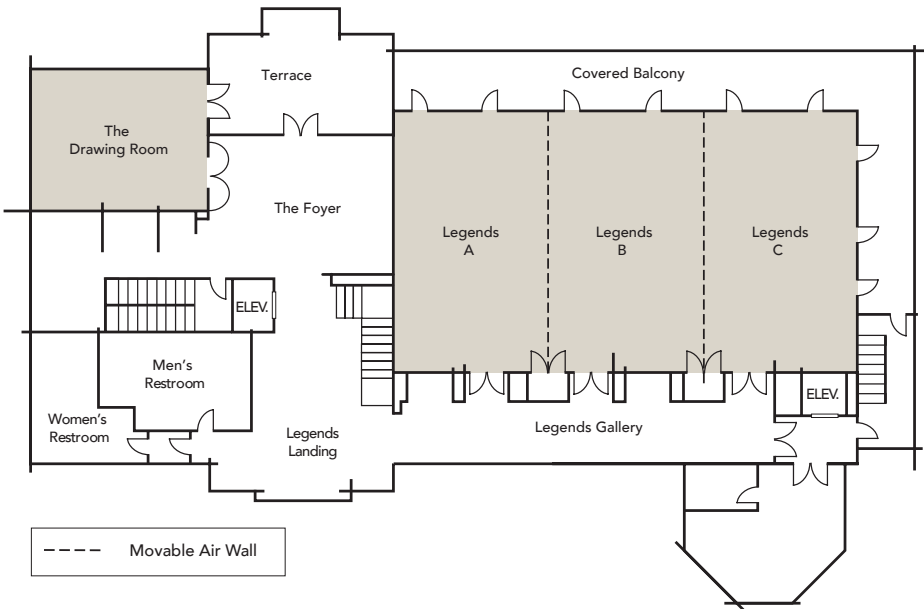
Conveniently located, this Clubhouse is within easy walking distance of Resort Villas and Home accommodations. Stop in to enjoy several amenities, including Tomasso, the island’s Italian eatery, as well as the Tommy Cuthbert Golf Learning Center. Nearby you’ll also find Kiawah Beach, Night Heron Park, swimming pools and the Roy Barth Tennis Center.

Legends

Offering a total of 3,540 square feet of event space on the second level of the Clubhouse, Legends can be divided into three separate rooms and accommodates up to 360 guests. Legends Gallery offers a spacious pre-event area for additional group gatherings. The adjacent covered balcony features views of the Jack Nicklaus–designed golf course.

The Drawing Room

Featuring golf course views from the second level of the Clubhouse, The Drawing Room totals 810 square feet of space and accommodates up to 50 guests.



Room	Sq. Ft.	Dimensions	Ceiling Height	Banquet	Theater	Classroom	Reception	U-Shape
Legends A, B or C	1,180	26' x 44'	12'	70	100	54	150	36
Legends ABC	3,540	80' x 44'	12'	280	360	216	40	63
The Drawing Room	810	34' x 24'	10'	40	50	21	20	18
Legends Gallery	781	33' x 23'	10'	N/A	N/A	N/A	30	N/A



WEDDINGS AND EVENTS

Lifelong dreams come vividly to life with idyllic indoor and outdoor settings to play host to your lavish social gathering or breathtaking destination wedding. At every turn, your guests will be enchanted by our Lowcountry luxury, exemplary service culture, divine cuisine, world-class amenities and acclaimed overnight accommodations that create everlasting memories.





THE SANCTUARY CHAPEL

Kiawah Island Golf Resort enhances its reputation for dream destination weddings with The Sanctuary Chapel. This reverent, non-denominational setting features stately architecture and design details that embody the spirit of South Carolina’s fabled coastal community. Connected to The Sanctuary by a colonnaded walkway and courtyard garden, The Sanctuary Chapel seats up to 150 guests and bestows an air of understated, yet unmistakable, sophistication for a breathtaking ceremony.



MINGO POINT

Situated on the banks of the Kiawah River and offering panoramic marsh views, Mingo Point is the setting for Kiawah Island’s longest-running event—a traditional Lowcountry oyster roast and barbecue accompanied by live musical entertainment. Groups of 50 to 800 will experience genuine Southern hospitality and an elegant presentation of delicious cuisine traditionally associated with the coastal region.



RESORT VILLAS AND PRIVATE HOMES

Tucked within maritime forests, along saltwater marshes, overlooking the Resort’s championship golf courses or perched above a shoreline that beckons the waves of the Atlantic, our Resort Villas and Private Homes offer guests effortless access to event venues and Resort amenities. These privately accessed accommodations offer an abundance of variety—including number of bedrooms, preferred views and level of appointments.

RESORT VILLAS

Nestled into prime locations across the island, you will discover Resort Villa accommodations in close proximity to your event venues and island amenities of choice. Our collection offers one to four bedrooms in Resort, Deluxe and Premier Villas boasting scenic, partial ocean or ocean views.

PRIVATE HOMES

Private and Premier Homes provide the ultimate immersion in our desirable island lifestyle. These immaculate homes feature two to eight bedrooms and showcase a wide range of luxurious appointments, which can include private outdoor pools and a dedicated concierge.

THE COTTAGES AT THE OCEAN COURSE

Situated mere steps from The Ocean Course Clubhouse with the Atlantic Ocean as a dramatic backdrop, these ultra-exclusive four-bedroom cottages deliver a one-of-a-kind immersive golf experience. Guests of The Cottages at The Ocean Course will walk in the footsteps of the game’s greatest players.



RECREATION

Our natural setting provides an inimitable backdrop for collaborative team-building and pleasurable leisure time pursuits. Players and athletes can test their limits on our tennis courts and through our abundant fitness offerings. Outdoor enthusiasts can find adventure and connect with nature at every turn while more tranquil moments can be found in shopping, poolside relaxation and artistic endeavors.



TENNIS

Earning top accolades for facilities and professional instruction year after year, the acclaimed Roy Barth Tennis Center features 22 courts—including ten Har-Tru clay courts—all tucked into the Resort’s unspoiled surroundings for an unsurpassed player experience.



NATURE

Nature is the essence of Kiawah Island. Discover yourself in maritime forests, beside saltwater marshlands and meandering lagoons and on miles of award-winning beaches along the Atlantic Ocean. Carve out time for a peaceful moment and allow our naturalists to introduce you to the island’s native wildlife and habitats.



SHOPPING

Mementos of time spent on Kiawah Island—along with professional-caliber golf and tennis equipment, accessories and apparel, gifts for the home and beach essentials—are available in our distinctive boutiques and pro shops across the island.



SWIMMING

Guests are invited to relax within two exclusive Resort pools. Both the Night Heron and West Beach locations offer multiple swimming pools, casual outdoor dining and abundant lounging under the golden South Carolina sun.



WEST BEACH VILLAGE

- Cougar Point Golf Course
- Mingo Point
- West Beach Pool Complex
- West Beach Conference Center
- Resort Villa Registration
- Resort Villas and Private Homes
- The Players’ Pub, West Beach Cantina (seasonal)
- Oak Point Golf Course, Beach

EAST BEACH VILLAGE

- Turtle Point Golf Course/Clubhouse
- Night Heron Park
- Night Heron Pool Complex
- Roy Barth Tennis Center
- Resort Villas and Private Homes
- Tomasso at Turtle Point, Night Heron Grill and Bar (seasonal), The Market at Town Center
- Tommy Cuthbert Golf Learning Center, Beach

VANDERHORST

- Private Homes
- The Ocean Course Clubhouse, Osprey Point Clubhouse
- The Atlantic Room, Ryder Cup Bar, Cherrywood BBQ and Ale House
- The Ocean Course, Osprey Point Golf Course

THE SANCTUARY AT KIAWAH ISLAND GOLF RESORT

- Grand Oaks Ballroom, Terrace Ballroom, Heron Room, Executive Meeting Rooms, Calhoun Boardroom, Hospitality Suites, Grand Lawn
- The Ocean Room, Jasmine Porch, The Lobby Bar, Beaches & Cream, Loggerhead Grill (seasonal)
- Pools, Spa, Fitness Center, Boutiques

- 1 Cougar Point Golf Course/Clubhouse
- 2 Turtle Point Golf Course/Clubhouse
- 3 Osprey Point Golf Course/Clubhouse
- 4 The Ocean Course/Clubhouse
- 5 Mingo Point
- 6 West Beach Pool
- 7 West Beach Conference Center
- 8 Villa Registration
- 9 Night Heron Park
- 10 Night Heron Pool Complex
- 11 Roy Barth Tennis Center
- 12 The Sanctuary at Kiawah Island Golf Resort



800.576.1585 | [KiawahResort.com](https://www.KiawahResort.com)
One Sanctuary Beach Drive | Kiawah Island, South Carolina 29455

