

# THE OCEAN COURSE CLUBHOUSE



A memorable setting for events, the Clubhouse boasts spectacular views of the Atlantic and 18th green of The Ocean Course—proud host of the 1991 Ryder Cup as well as the 2012 and 2021 PGA Championship. While the exterior suggests a classic coastal cottage, the grand interior features over 3,000 square feet of flexible group spaces and two restaurants. Enjoy fine dining in The Atlantic Room—the signature seafood restaurant on the island—or the more relaxed atmosphere of the Ryder Cup Bar with its indoor and outdoor seating. Both restaurants showcase sweeping ocean views.

## PGA Room

Offering 1,686 square feet of space, the PGA Room easily accommodates 120 guests for banquets, 152 for theater-style presentations and 78 in classroom settings.

## Dye Boardroom

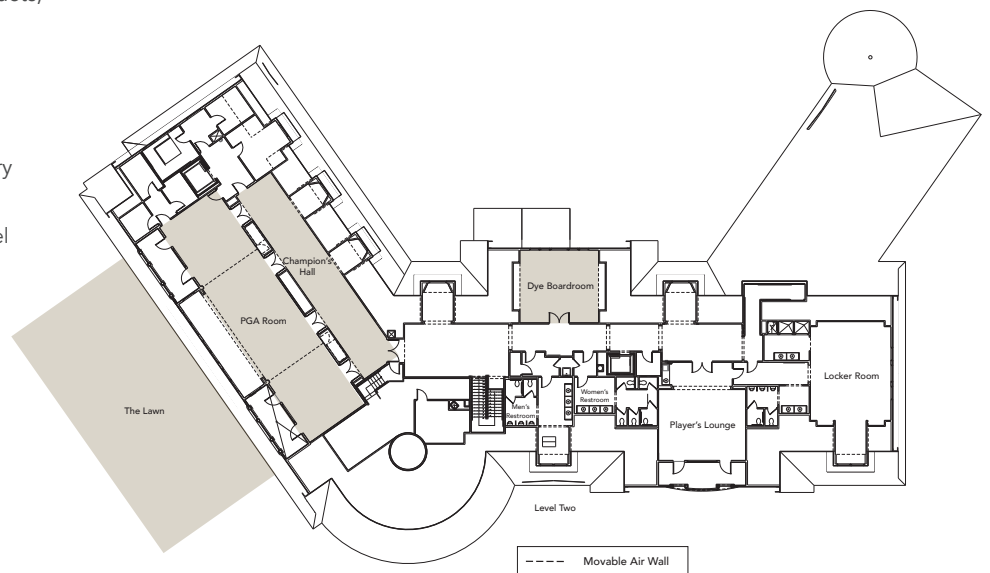
Named in honor of The Ocean Course's legendary designer Pete Dye and his wife Alice, the Dye Boardroom offers an elegant setting for high-level board meetings and executive retreats.

## Champion's Hall

With 792 square feet of space adjacent to the PGA Room, this area provides the ideal setting for pre-function events.

## The Lawn

Walk in the footsteps of golf's greats and take in unobstructed views of the iconic golf course and Atlantic Ocean when you host an unforgettable outdoor event on The Lawn of The Ocean Course Clubhouse.



Room	Sq. Ft.	Dimensions	Ceiling Height	Banquet	Theater	Classroom	Reception	U-Shape
PGA Room	1,686	80' x 21'	14'	120	152	78	N/A	66
Dye Boardroom	608	23' x 22'	14'	N/A	Conference table with executive seating for 12 guests			
Champion's Hall	792	66' x 12'	12'	N/A	N/A	N/A	N/A	N/A
The Lawn	4,600	N/A	N/A	250	N/A	N/A	325	N/A

*Kiawah Island*  
GOLF RESORT

800.576.1585 • [KiawahResort.com/meetings](https://KiawahResort.com/meetings)